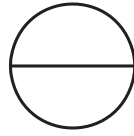




Tile Tech Inc.
Paving America one step at a time!

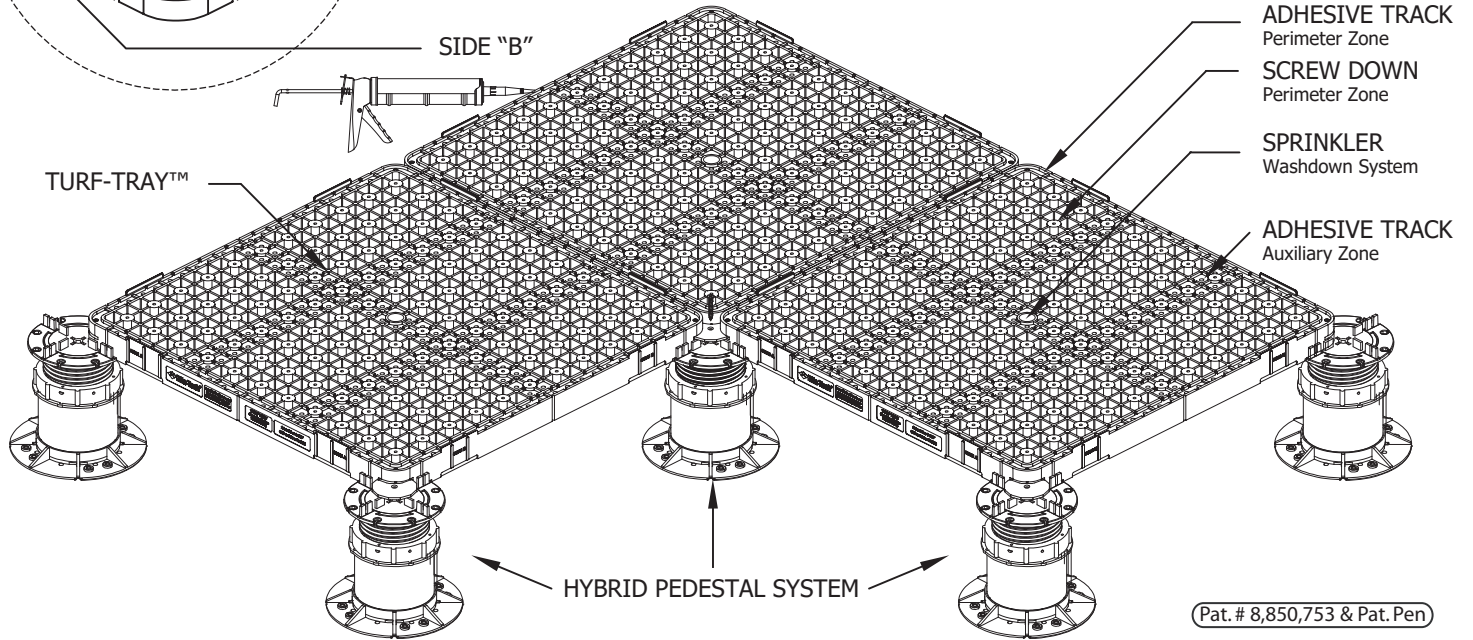
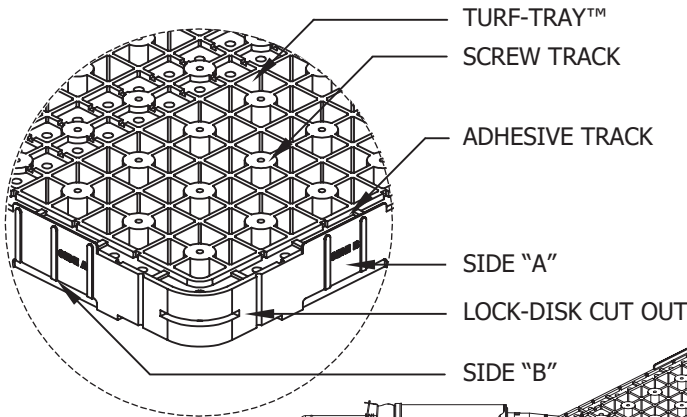


TURF-TRAY™ SYNTHETIC TURF SYSTEM

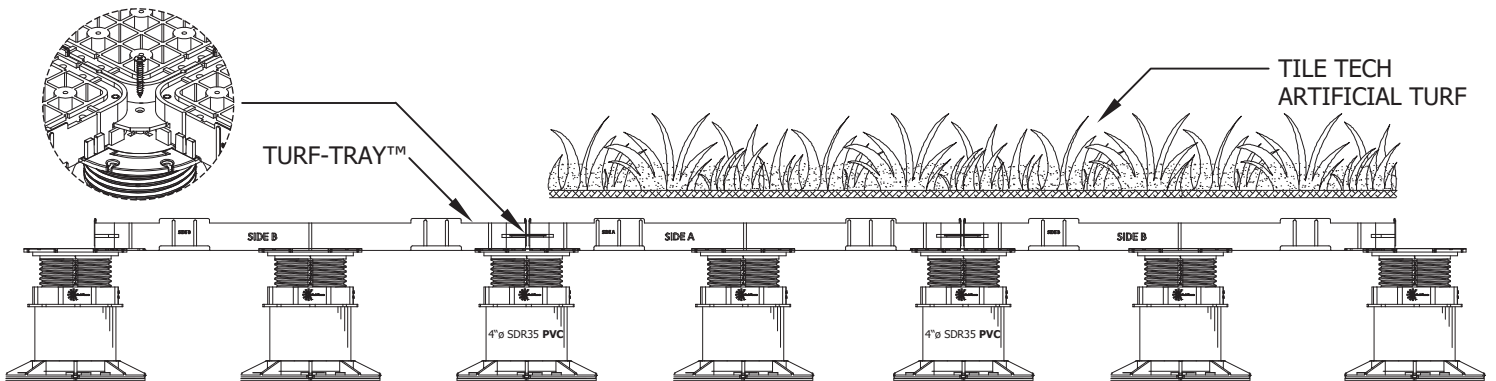
SYNTHETIC TURF SYSTEM DETAILS. PLAN AND PROFILE VIEW

National Distribution Tel: 213-380-5560
Toll Free: 888-380-5575 Fax: 213-380-5561

TURF-TRAY™ SYNTHETIC TURF SYSTEM COMPONENTS INCLUDES A SQUARE-GRID STRUCTURAL TRAY WITH A ADHESIVE TRACK & SCREW ANCHORING FOR THE ARTIFICIAL TURF. THE TRAYS ARE LOCKED TOGETHER USING THE HEX LOCK DISK, HEX 2MM SPACER TABS AND USER SUPPLIED 1-1/2" BLACK RUST PROOF SCREWS IN ADDITION TO CHEM-LINK™ M1 ADHESIVE. POSITION AND LEVEL HYBRID PEDESTAL SYSTEM ON TO GRID / CHALK LINES AND PLACE TURF-TRAY™ ON TO PEDESTAL SYSTEM INCLUDING CENTER PEDESTALS. LEVEL & SECURE FOUR ADJACENT CORNERS TO PEDESTAL SYSTEM USING HEX-LOCK DISK AND SECURE WITH DECK SCREW. AT TERMINATION POINTS AND WALL THE HEX-TRAY CAN BE CUT TO FIT. STRETCH & SECURE SYNTHETIC TURF TO TURF-TRAY™ USING ADHESIVE APPLIED TO THE ADHESIVE TRACK OR MECHANICALLY FASTENED USING SCREW TO THE TRY.



TURF-TRAY™ SYNTHETIC TURF - PROFILE VIEW



GENERAL NOTES: APPLY TO ALL OF THE ABOVE PRODUCTS

1. INSTALLATION MUST BE COMPLETED IN ACCORDANCE WITH TILE TECH INC PRODUCT SPECIFICATIONS.
2. DRAWING NOT TO SCALE.
3. USE OF CENTER PEDESTAL IS MANDATORY.
4. USE OF BUFFER PADS IS MANDATORY.
5. CONTRACTOR'S NOTE: FOR PRODUCT AND COMPANY INFORMATION VISIT www.TILETECHPAVERS.com