



GRAY - STONE

PORCELAIN PAVERS

SIZES

3/4" thickness



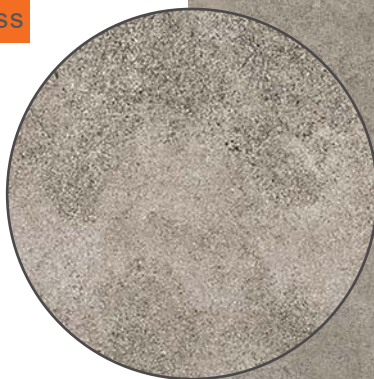
23¹/₂" x 23¹/₂"

598 x 598 mm

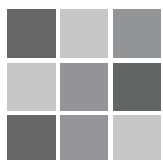


11³/₄" x 23¹/₂"

298 x 598 mm



Color & Shade Variation



V3
High shade
& texture variation

Installation Methods



THIN-SET
INSTALLATION



SAND & GRAVEL BASE
INSTALLATION



RAISED PEDESTAL
INSTALLATION



LOW PEDESTAL
INSTALLATION

Our Stone Series™ porcelain pavers offers the beauty and aesthetics of stone, without the maintenance and upkeep required for natural stone materials. Completely nonporous, they will not stain and require no sealing. Extremely high slip resistance for all finishes, ensures a safe floor area wet or dry.

| Technical Details | |
|-------------------------|----------------|
| Weight | 9.3 lb/sq.ft. |
| Water Absorption | 0.05% |
| Static Load (Center) | 1,800 lbf |
| Slip Resistance | R11 (DIN51130) |
| Frost Reistant | Yes |
| Solar Reflectance (SRI) | 43 |
| Rectified | Yes |

| Packaging Details | |
|---------------------|--|
| Packaging (24 x 24) | 72 pcs 279 sq.ft. 2,700 lb / Pallet |
| Packaging (12 x 24) | 160 pcs 310 sq.ft. 2,950 lb / Pallet |

Full test reports and specification details available on our site.

