

# FLAT-SMOKE

## PORCELAIN PAVERS

### SIZES 3/4" thickness



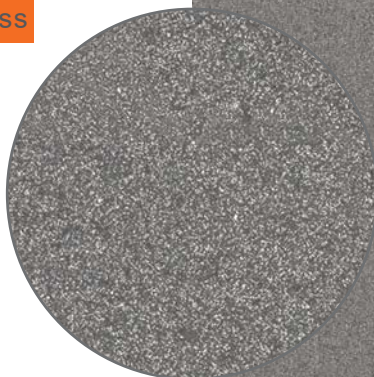
23<sup>1</sup>/<sub>2</sub>" x 23<sup>1</sup>/<sub>2</sub>"

598 x 598 mm

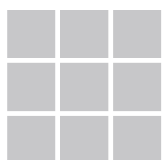


11<sup>3</sup>/<sub>4</sub>" x 23<sup>1</sup>/<sub>2</sub>"

298 x 598 mm



### Color & Shade Variation



V1  
Uniform appearance

### Installation Methods



THIN-SET  
INSTALLATION



SAND & GRAVEL BASE  
INSTALLATION



RAISED PEDESTAL  
INSTALLATION



LOW PEDESTAL  
INSTALLATION

Our Earthtone Series porcelain pavers are designed to mimic traditional monochromatic, sand blasted concrete pavers without the efflorescence and maintenance required for concrete. Completely nonporous, they will not stain and require no sealing. Extremely high slip resistance for all finishes, ensures a safe floor areas.

Technical Details	
Weight	9.3 lb/sq.ft.
Water Absorption	0.05%
Static Load (Center)	1,800 lbf
Slip Resistance	R11 (DIN51130)
Frost Reistant	Yes
Solar Reflectance (SRI)	35
Rectified	Yes

Packaging Details	
Packaging (24 x 24)	72 pcs   279 sq.ft.   2,700 lb / Pallet
Packaging (12 x 24)	160 pcs   310 sq.ft.   2,950 lb / Pallet

Full test reports and specification details available on our site.