

Granite-Tech™ Series Pavers

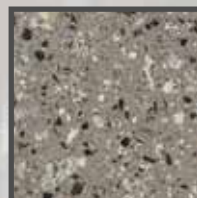


Designed to mimic the natural beauty of granite, **Granite-Tech™** pavers gives the surface a granite-like appearance which adds slip resistant qualities to the paver.

**Granite-Tech™** pavers are produced under extreme hydraulic pressure by bonding crushed granite & limestone together within a color cement matrix duplicating the forces of nature. The pavers are then ground to expose the beauty of the natural granite chips and can be honed or shot blasted resulting in a granite-like, slip resistant & high strength paver. Matching stair treads and pool copings are also available.



**Beveled Edge** Tile Tech Pavers provide added trip-hazard protection in commercial and residential pedestrian applications. In addition the beveled edges prevent pavers from chipping and disguise unsightly & uneven leveling.



**Superior Surface Finish**

The modern, sleek, terrazzo look of Granite-Tech™ pavers are the ideal choice for any contemporary project, commercial or residential.



**Superior Wear Resistance**

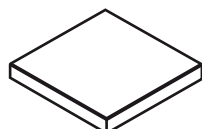
The use of crushed recycled granite not only adds unrivaled beauty to any project it is also a highly durable and eco-friendly alternative.



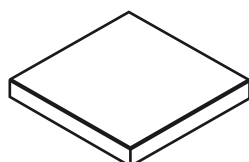
**Custom Colors & Designs**

Design possibilities are endless with a unlimited choice of colors & aggregate mixes. The surface can be polished or shot blasted for added slip resistant qualities.

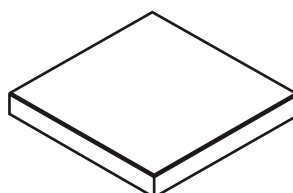
Standard Sizes



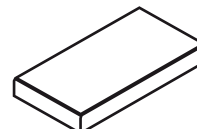
12 x 12



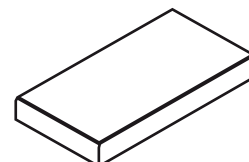
16 x 16



20 x 20



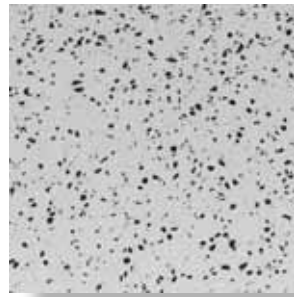
12 x 24



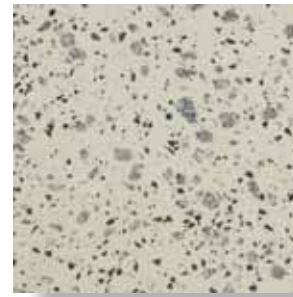
16 x 24



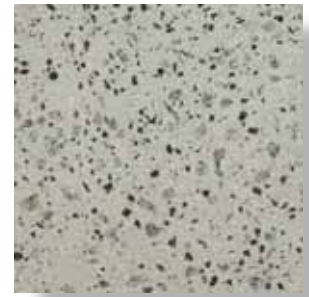
Penny Lane



White Black



Vanilla Gray



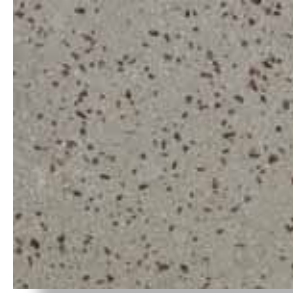
Straw



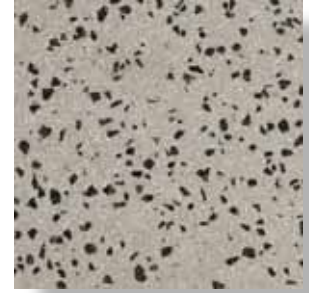
Pewter



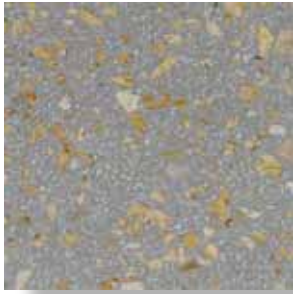
Gray Black



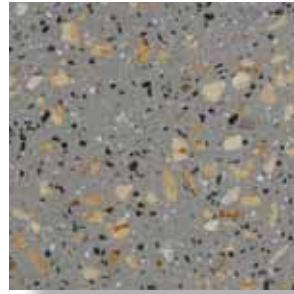
Mist Wine



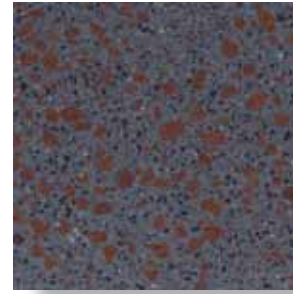
Mist Black Large



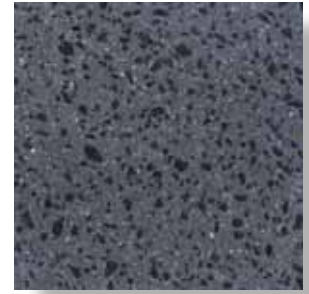
Mist Gold



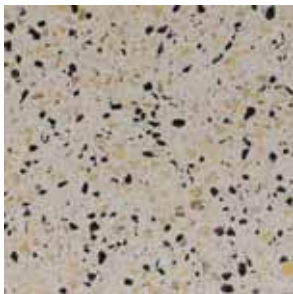
Gray Brown



Charcoal Brick



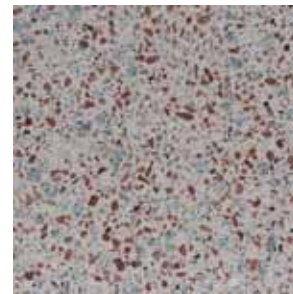
Charcoal



Cream Black



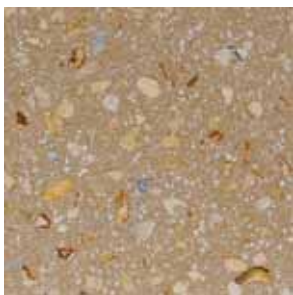
Cream White



Rose Wine



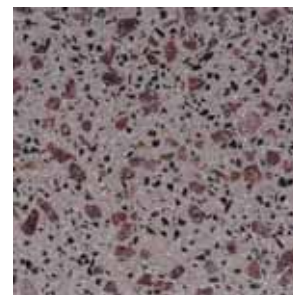
Peach



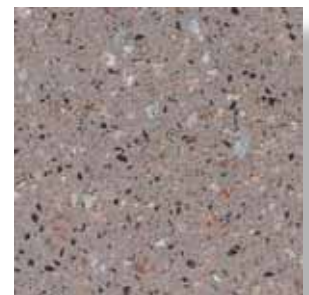
Mocha Gold



Brown Gold

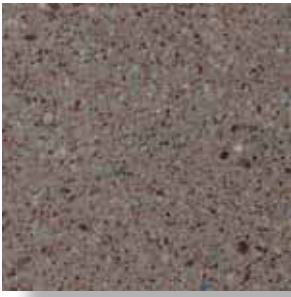


Brown Wine

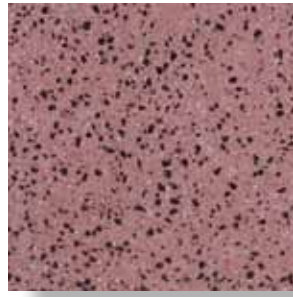


Hydro Brown

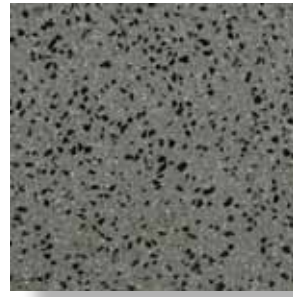
**Please Note:** Colors & finishes shown are only a representation. Please request samples for approval.



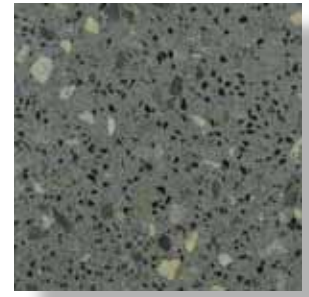
Rose Brown



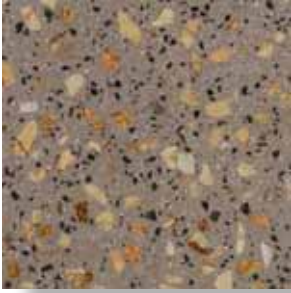
Red Black



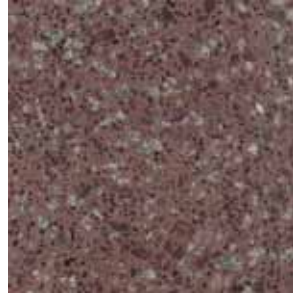
Green Black



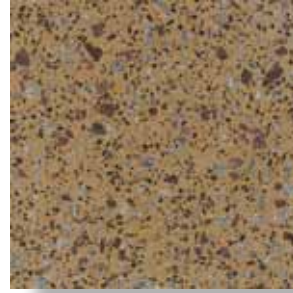
Verde Green



Brown Peach



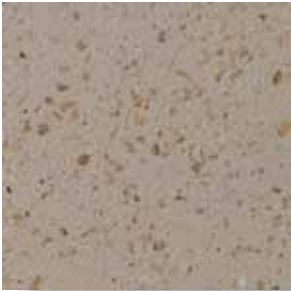
Burgundy Wine



Mustard Wine



Gray Peach



Desert Large Gold



Desert Small Gold

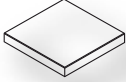
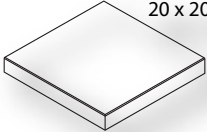
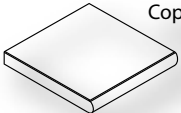
### Custom Colors & Designs

**Granite-Tech™** Pavers are available in an unlimited choice of colors & mix designs. There are also several finishes to choose from. The surface can be shot blasted or polished and can be sealed or unsealed. Our design team will formulate custom mix designs to meet any design requirements.



Above & Left : Park La Brea Apartments - Los Angeles, CA  
Architect: Caudet Design Group

Application: Pool Deck - Pedestal Set  
Size & Color: 20" x 20" x 2" Granite-Tech: Mocha Gold

PAVER SPECS	Size L x W (inch)	Thickness (inch)	Weight per SqFt (Lb)	Weight per Unit (Lb)	Unit per Pallet (pcs)	Colors				
						Granite-Tech	Stamp-Tech	Oceanic Ser.	Cool-Roof	
 12 x 12	11.875" x 11.875" 300mm x 300mm	1"	•	11lb	11lb	250	•	•	•	•
		1-1/2" 2"	• •	21lb	21lb	126	•	•	•	•
 12 x 24	11.875" x 23.622" 300mm x 600mm	1"	•	16lb	32lb	95	•	•	•	•
		1-1/2" 2"	• •	20lb	40lb		•	•	•	•
 16 x 16	15.75" x 15.75" 400mm x 400mm	1"	•	15lb	30lb	108	•	•	•	•
		1-1/4" 1-1/2" 2"	• • •							
 16 x 24	15.75" x 23.622" 400mm x 600mm	1"	•	16lb	42lb		•	•	•	•
		1-1/4" 1-1/2" 2"	• • •	21lb	55lb					
 20 x 20	19.68" x 19.68" 500mm x 500mm	1"	•	21lb	58lb	48	•	•	•	•
		1-1/2" 2"	• •							
 Coping	48" x 14" 1200mm x 400mm *Full Rounded Bullnose	1" 1-1/2" 2"	• • •	18lb	70lb	12	•	•	•	•

PAVER PROPERTIES	TEST METHOD	RESULTS
Compressive Strength	ASTM C-140	8,000psi Min
Flexural Strength	ASTM C-293	700psi Min
Water Absorption	ASTM C-936	5% Max
Coefficient of Friction	ASTM C-1028	0.6% Min
Freeze Thaw	ASTM C-67	1% Max
Dimensional Tolerance	+/- 1/16" Length, width, height, convex, concave.	

### MAINTENANCE

Pavers will require some periodic maintenance to keep them in a reasonable condition. Dirt, dust and leaves should be regularly removed and any weed growth should be sprayed and controlled.

### CLEANING

All pavers will require cleaning from time to time. Oil, rust, efflorescence and other stains can detract from the appearance of the paver. Specialized cleaning products for concrete pavers are readily available.

### SEALING

If a more protective surface is required or the pavers will knowingly be subject to salt attack then we suggest sealing your paving. Tile Tech recommends sealing pavers not for structural reasons but for aesthetic and maintenance purposes.

For complete material & installation specifications, please visit our website or contact us.